

# WELCOME

## **I-55 Reconstruction Design Study & Environmental Assessment**

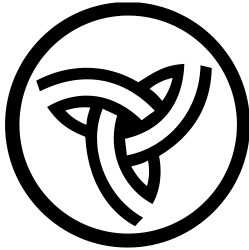


**Advisory Group Meeting  
Wednesday, March 13, 2013**

**RECONSTRUCTION**  
DESIGN STUDY & ENVIRONMENTAL ASSESSMENT  
SPRINGFIELD • SANGAMON COUNTY



# WELCOME



## Illinois Department of Transportation

The Illinois Department of Transportation (IDOT), the agency in charge of state-maintained public roadways, is conducting the I-55 Study with the assistance of a consultant team, led by Hanson Professional Services Inc.

**RECONSTRUCTION**

DESIGN STUDY & ENVIRONMENTAL ASSESSMENT

SPRINGFIELD • SANGAMON COUNTY



# INTRODUCTIONS

- IDOT
- Hanson Professional Services Inc.
- Vector Communications
- Advisory Group



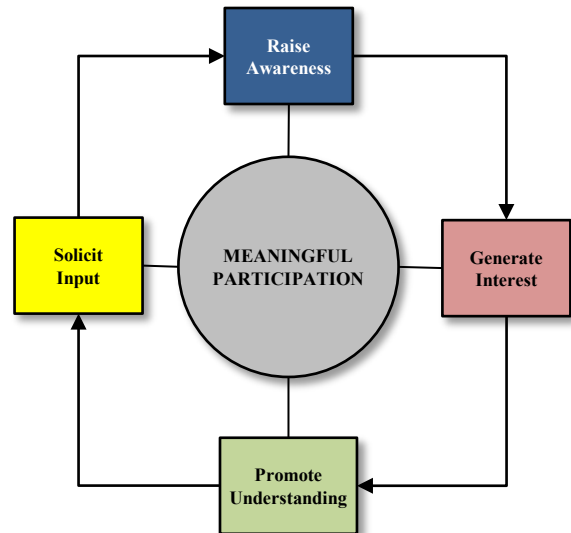
# GOALS & OBJECTIVES

## Public Involvement Goal:

- Obtain community's meaningful participation in I-55 study through various involvement tactics

## Objectives:

- **Raise Awareness:**
  - Provide clear, accurate and easily attainable information on study
- **Generate Interest:**
  - Address community's needs, interests and values
- **Promote Understanding:**
  - Help community understand study's possible impacts
- **Solicit Input:**
  - Seek community's feedback on study findings



# RULES OF ENGAGEMENT

- **Ground Rules**

- Arrive prepared
- Respect differences
- Avoid side talk
- Put phones on silent
- Share speaking time
- Strive for consensus
- Ask questions
- Voice concerns at meetings



# PURPOSE & ROLE OF ADVISORY GROUP

- Critical component of the public participation program
- Obtain community input
- Identify and address local concerns
- Help build public interest and involvement in the decision-making process

# MEETING OBJECTIVES

- Review the study's purpose and need and traffic projections
- Discuss the lane configuration recommendation
- Discuss each of the interchange recommendations
- Respond to questions and comments



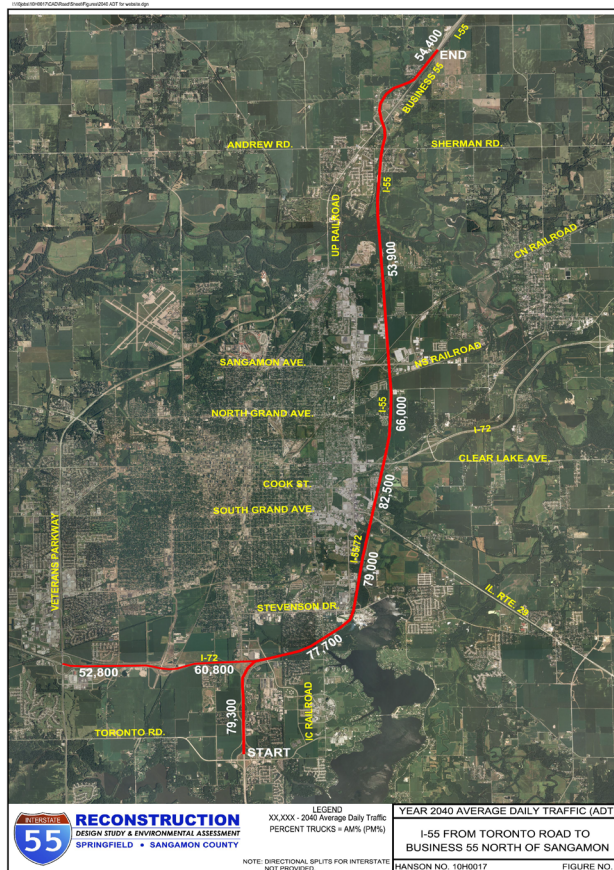
# STUDY CORRIDOR

**RECONSTRUCTION**  
*DESIGN STUDY & ENVIRONMENTAL ASSESSMENT*  
SPRINGFIELD • SANGAMON COUNTY



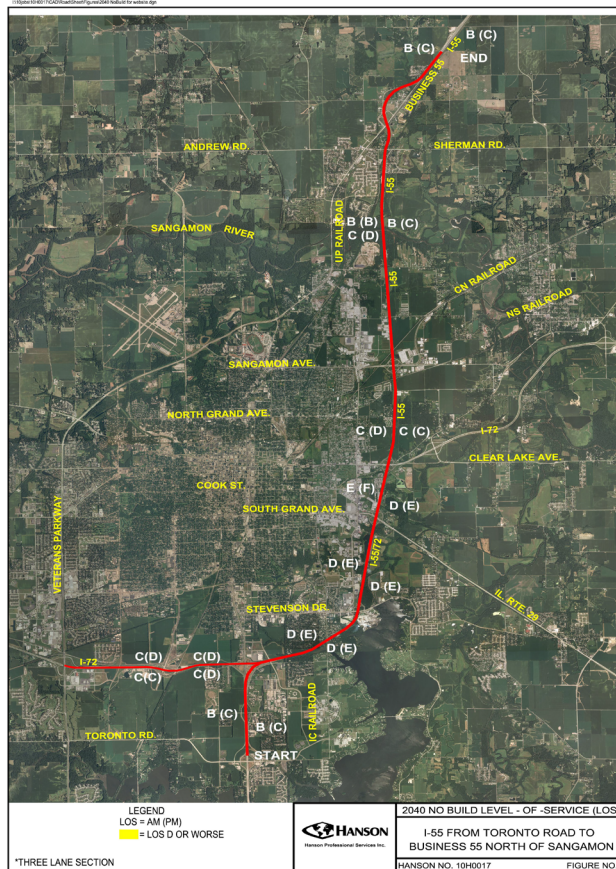
# YEAR 2040 AVERAGE DAILY TRAFFIC

**RECONSTRUCTION**  
 DESIGN STUDY & ENVIRONMENTAL ASSESSMENT  
 SPRINGFIELD • SANGAMON COUNTY



# 2040 NO BUILD LEVEL OF SERVICE

**RECONSTRUCTION**  
 DESIGN STUDY & ENVIRONMENTAL ASSESSMENT  
 SPRINGFIELD • SANGAMON COUNTY



# PURPOSE & NEED

- Improve safety
  - Eliminate weaving
- Increase capacity
  - Add lanes
- Meet current design standards
  - Eliminate tight radius ramps



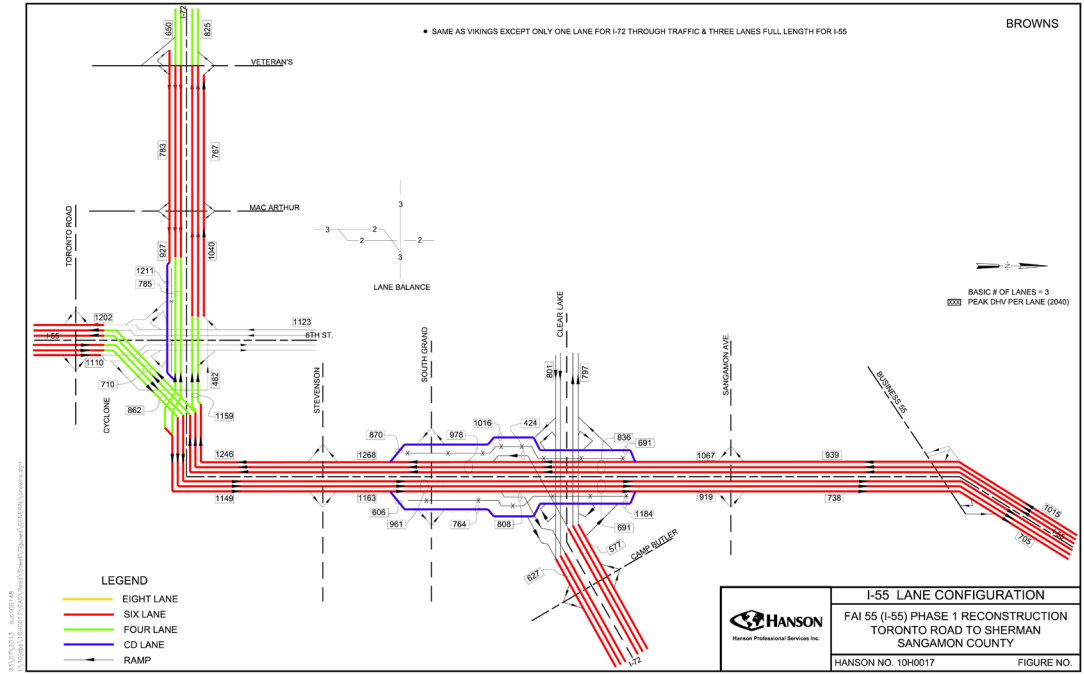
# ADDITIONAL LANES

- Three lanes each direction
  - Median barrier
  - Wide shoulders
- Collector – distributor roads
  - Used by entering and exiting traffic
  - Lower operating speed



# LANE CONFIGURATION

**RECONSTRUCTION**  
 DESIGN STUDY & ENVIRONMENTAL ASSESSMENT  
 SPRINGFIELD • SANGAMON COUNTY

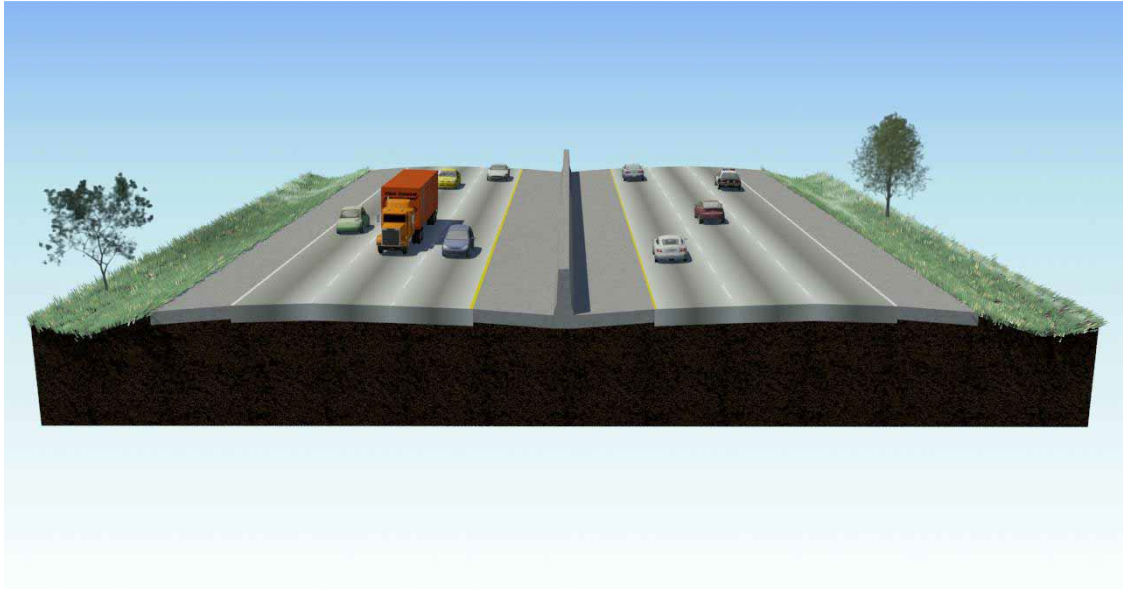


# TYPICAL SECTION – 3 LANES

**RECONSTRUCTION**

DESIGN STUDY & ENVIRONMENTAL ASSESSMENT

SPRINGFIELD • SANGAMON COUNTY

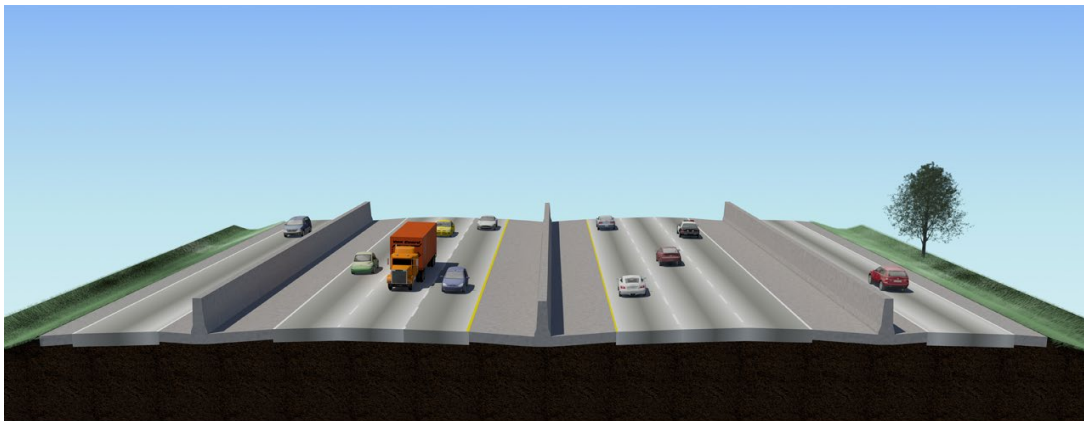


# COLLECTOR-DISTRIBUTOR ROADS

**RECONSTRUCTION**

*DESIGN STUDY & ENVIRONMENTAL ASSESSMENT*

SPRINGFIELD • SANGAMON COUNTY



# COLLECTOR-DISTRIBUTOR ROADS VIDEO

**RECONSTRUCTION**

*DESIGN STUDY & ENVIRONMENTAL ASSESSMENT*

SPRINGFIELD • SANGAMON COUNTY



[www.i55springfield.com](http://www.i55springfield.com)

# PROPOSED INTERCHANGES

- A. Sixth Street / I-72
- B. Stevenson Drive
- C. South Grand Avenue
- D. Clear Lake Avenue / I-72
- E. Sangamon Avenue

**RECONSTRUCTION**

DESIGN STUDY & ENVIRONMENTAL ASSESSMENT

SPRINGFIELD • SANGAMON COUNTY

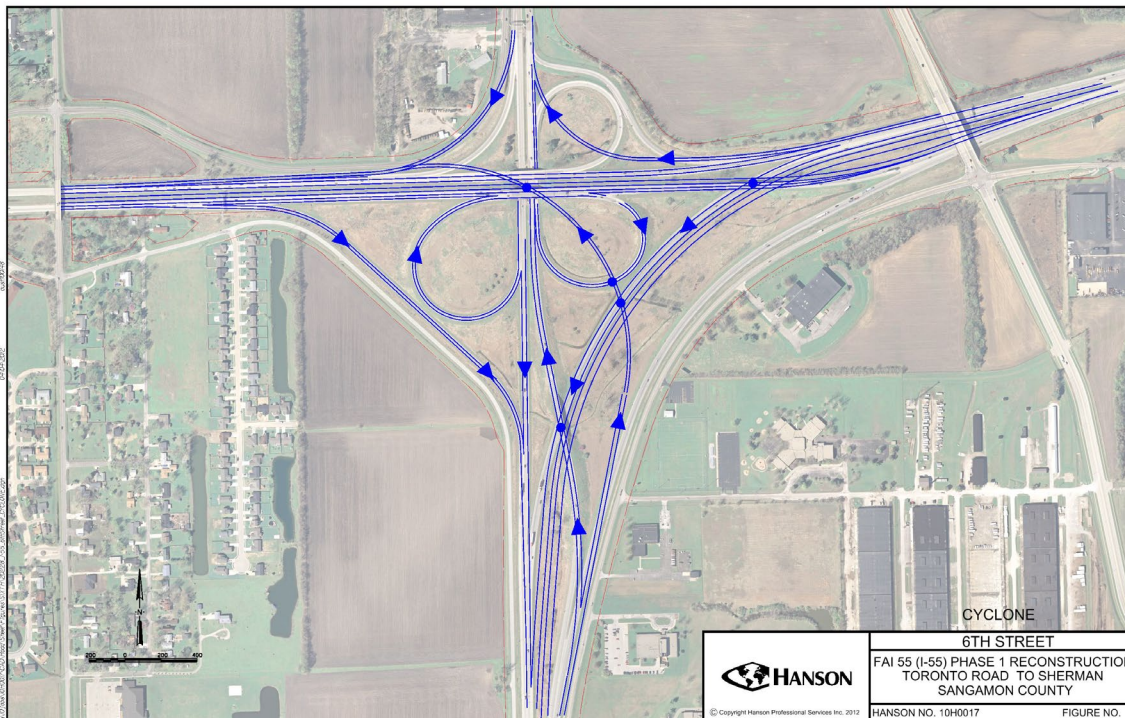


# SIXTH STREET / I-72

## RECONSTRUCTION

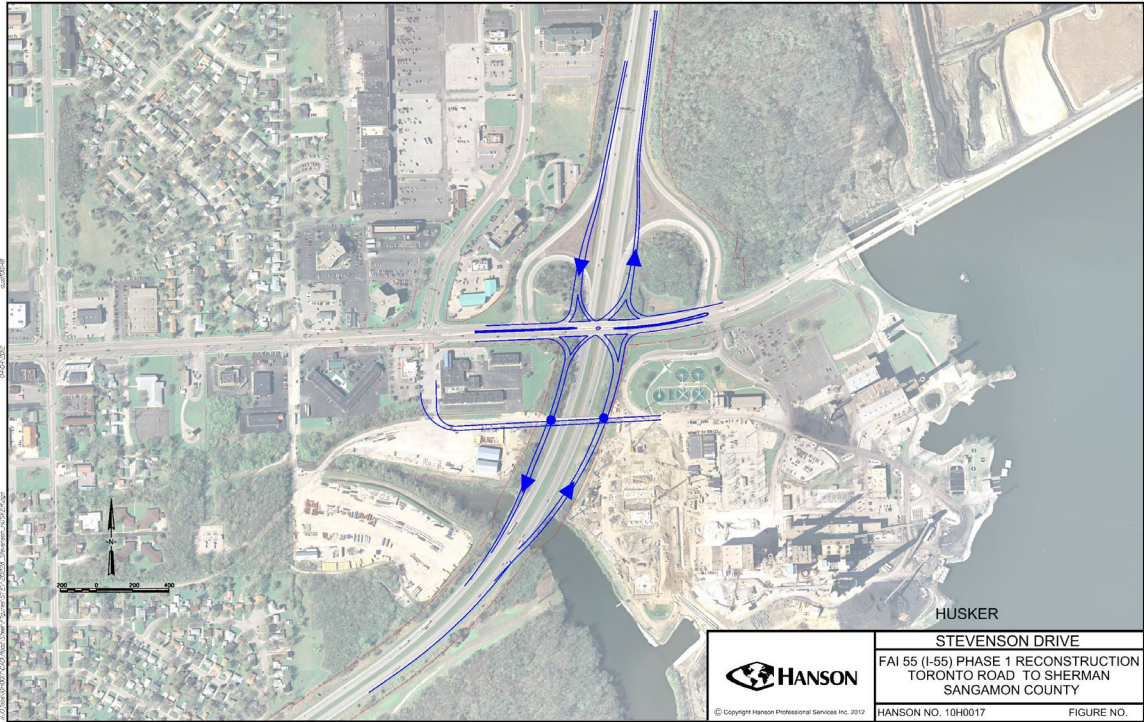
DESIGN STUDY & ENVIRONMENTAL ASSESSMENT

SPRINGFIELD • SANGAMON COUNTY



# STEVENSON DRIVE

**RECONSTRUCTION**  
DESIGN STUDY & ENVIRONMENTAL ASSESSMENT  
SPRINGFIELD • SANGAMON COUNTY

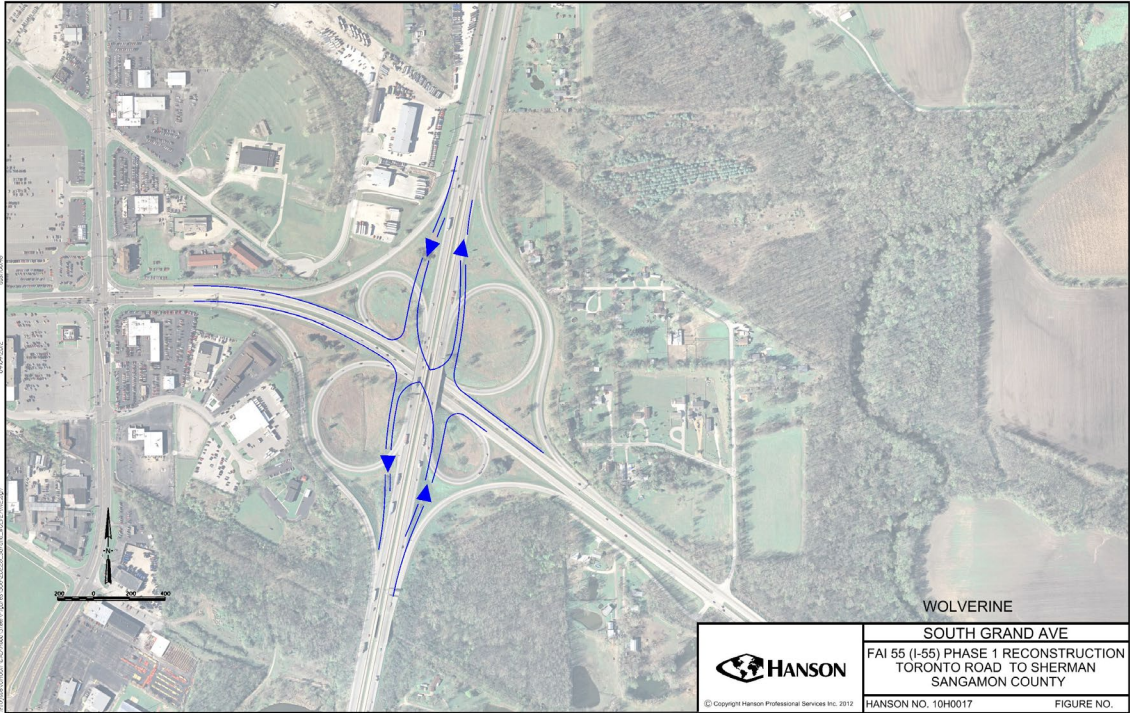


# SOUTH GRAND AVENUE

**RECONSTRUCTION**

DESIGN STUDY & ENVIRONMENTAL ASSESSMENT

SPRINGFIELD • SANGAMON COUNTY

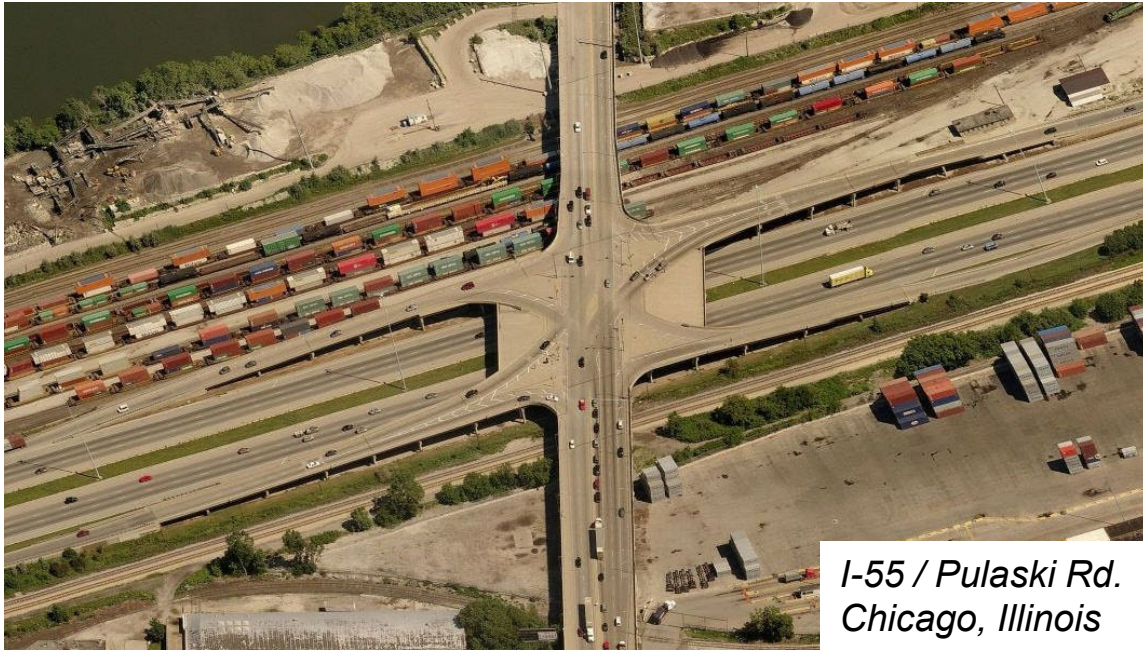


# SINGLE POINT DIAMOND

**RECONSTRUCTION**

DESIGN STUDY & ENVIRONMENTAL ASSESSMENT

SPRINGFIELD • SANGAMON COUNTY

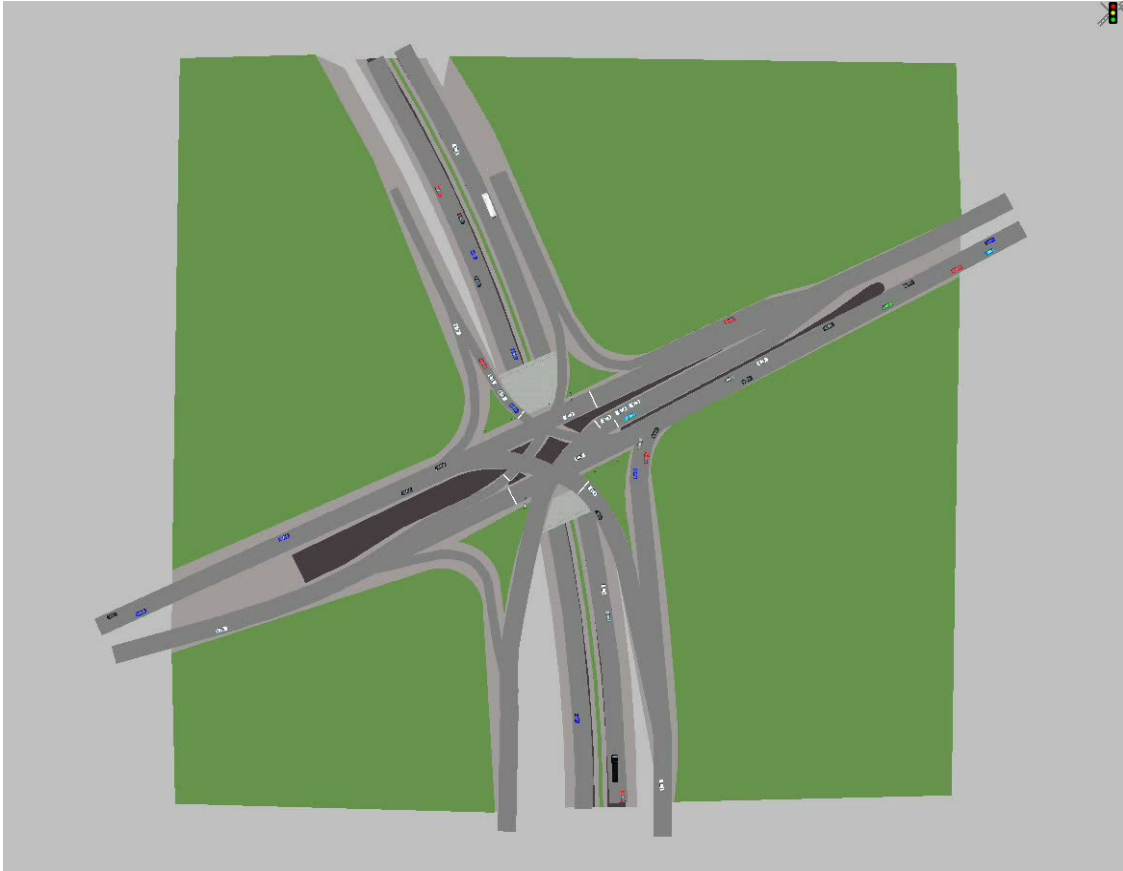


*I-55 / Pulaski Rd.  
Chicago, Illinois*

# SINGLE POINT DIAMOND VIDEO

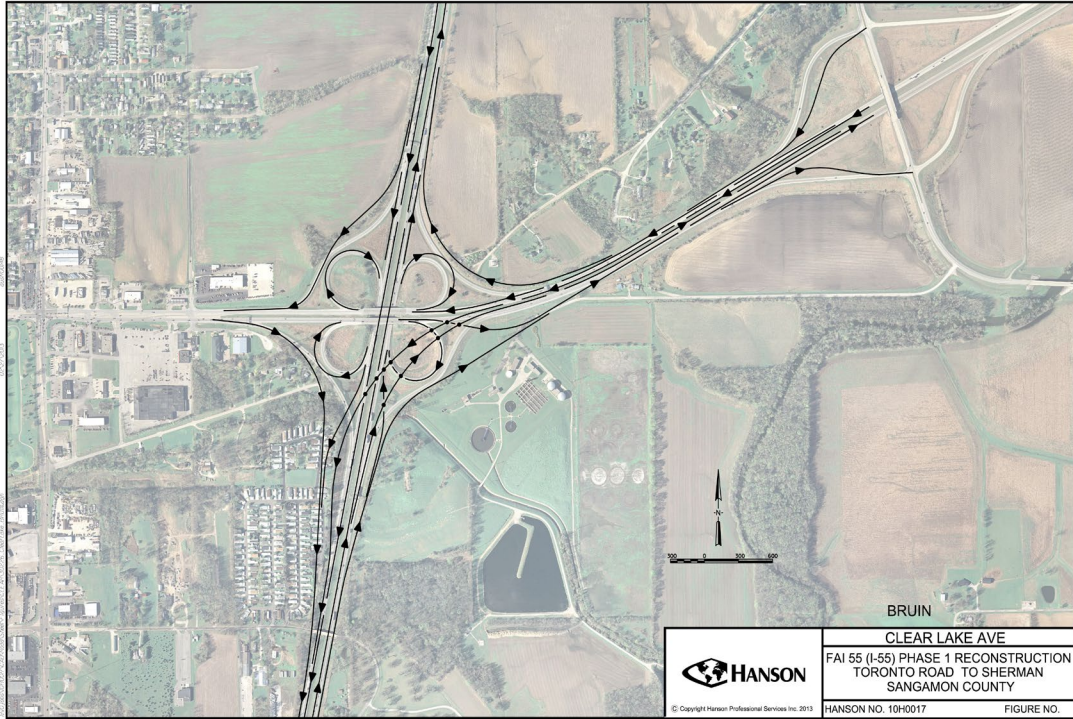


**RECONSTRUCTION**  
*DESIGN STUDY & ENVIRONMENTAL ASSESSMENT*  
SPRINGFIELD • SANGAMON COUNTY



# CLEAR LAKE AVENUE / I-72

**RECONSTRUCTION**  
DESIGN STUDY & ENVIRONMENTAL ASSESSMENT  
SPRINGFIELD • SANGAMON COUNTY



# DIRECTIONAL

## RECONSTRUCTION

DESIGN STUDY & ENVIRONMENTAL ASSESSMENT

SPRINGFIELD • SANGAMON COUNTY



*I-255 / I-270  
Mehlville, Missouri*



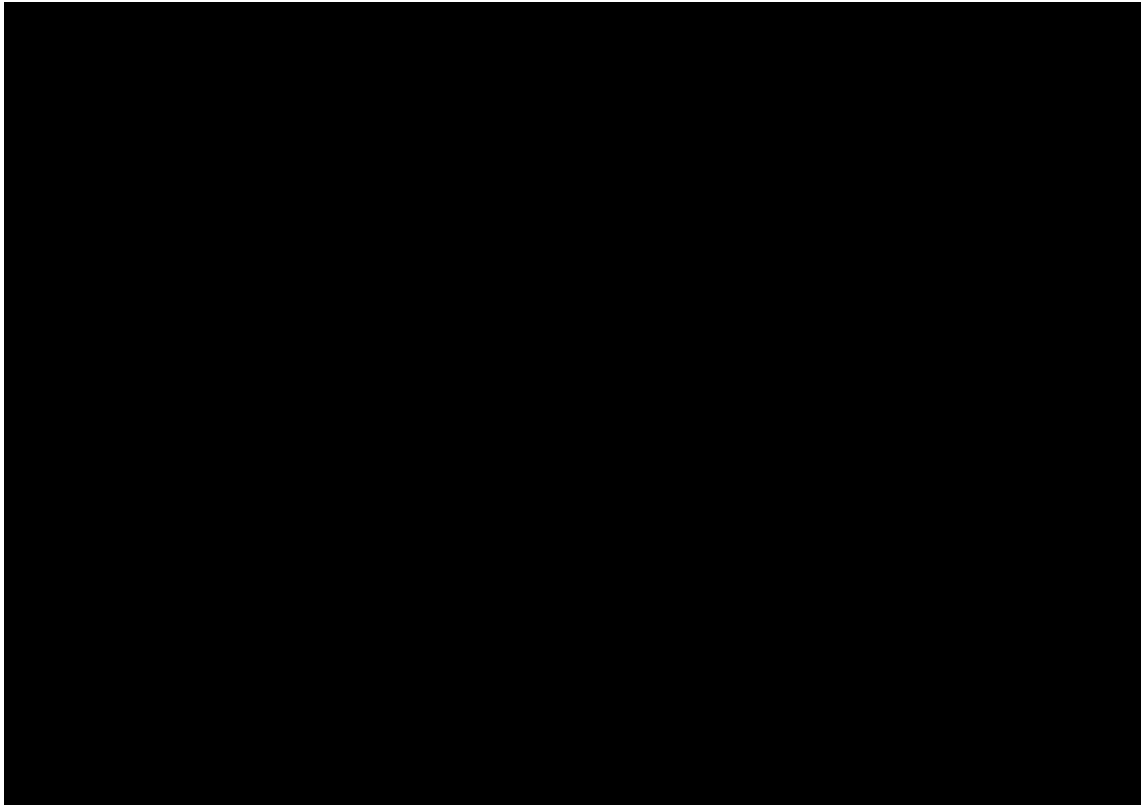
# PROGRESSION ANALYSIS VIDEO



**RECONSTRUCTION**

*DESIGN STUDY & ENVIRONMENTAL ASSESSMENT*

SPRINGFIELD • SANGAMON COUNTY



[www.i55springfield.com](http://www.i55springfield.com)

# DISCUSSION



**RECONSTRUCTION**  
*DESIGN STUDY & ENVIRONMENTAL ASSESSMENT*  
SPRINGFIELD • SANGAMON COUNTY



# NEXT STEPS

- Complete interchange type studies
- IDOT review of type studies
- Begin Access Justification Report
- Continue environmental studies
- Next SAG meeting to be held once Access Justification Report is approved

